

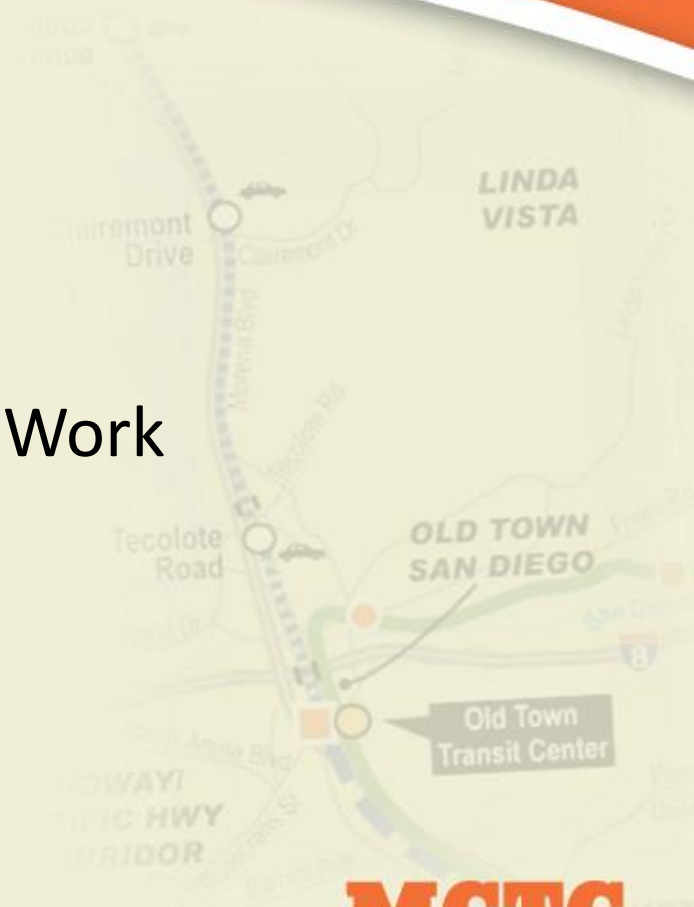
# Mid-Coast Corridor Transit Project Contractor Open House Event for ELVIRA TO MORENA DOUBLE TRACK (EMDT) and MID-COAST LRT (MCCTP)

September 2, 2015



# AGENDA

- What is CM/GC?
- Who is MCTC?
- What's New?
- Self-Performed and Subcontractor Work
- Project Overviews
- Bidding On the Work
- Contact Us
- Networking



**MCTC**



**Mid-Coast Transit Constructors**  
Stacy and Witbeck · Herzog · Skanska

# What is CM/GC?

- CM/GC Delivery Method
  - Two-Phase Approach, Designers Employed by SANDAG
    - Pre-Construction Services
      - Value Engineering
      - Constructability
      - Work Planning, Phasing and Sequencing
      - Scheduling
      - Cost Estimating
    - Construction Services (General Contractor – Prime)
      - Self-Perform
      - Sub-Contract
      - Full Service: Quality Program, Public Information



# THE TEAM

## MID-COAST TRANSIT CONSTRUCTORS

Mid Coast Transit Constructors (MCTC) is a fully integrated Joint Venture of Stacy and Witbeck, Herzog, and Skanska. We have combined these three highly successful construction organizations to bring a collection of talents uniquely suited for the CMGC 1 projects. MCTC team members are heavy civil constructors specializing in CM/GC contracting for rail projects. We are experts at self-performing rail and bridge work proudly managed and built by our own forces.

In the past 10 years our firms have constructed over 600 miles of track for passenger service. Together, our CM/GC experience includes more than 30 rail transit projects with a total value of over \$4.7 billion.

**Stacy and  
Witbeck**

**HERZOG**

**SKANSKA**

# TYPICAL MCTC SELF-PERFORMED & SUBCONTRACTOR WORK



A map of San Diego showing transit corridors. The map highlights the Mid-Coast Transit Corridor (MCTC) in orange and the Old Town Transit Center in a yellow circle. Other labels include Linda Vista, Chairemont Drive, Tecolote Road, and Old Town San Diego. The map also shows the Midway and Hwy 163 Corridor.

**MCTC**

Mid-Coast Transit Constructors  
Stacy and Witbeck · Herzog · Skanska

# MCTC SELF-PERFORMED WORK

- Concrete and Steel Bridges
- Walls
- Grading
- Trackwork
- Guideway Drainage



**MCTC**



Mid-Coast Transit Constructors  
Stacy and Witbeck · Herzog · Skanska

# SUBCONTRACTOR WORK

- Surveying
- Traffic Control
- Wet Utilities
- Dry Utilities
- Roadway
- Electrical/Systems
- Mechanical/Plumbing
- Station Finishes
- Site Work
- Rebar
- Environmental
- Drilling
- Shoring
- Site Maintenance
- Masonry
- Landscape
- Asphalt Paving
- Fencing
- Inspection and Testing

# WHAT HAS ALREADY BEEN BID OUT?

- CP Rose
- Wet Utilities  
(Station/Park-n-Ride  
Plumbing & Storm Drain  
Not Yet Released)
- Inspection and Testing
- Surveying
- Railroad Signaling\*
- Mid-Coast LRT Systems  
(Train Control,  
Communications,  
Overhead Catenary,  
Traction Power)\*
- San Diego River Bridge  
Double Track



**MCTC**



Mid-Coast Transit Constructors  
Stacy and Witbeck · Herzog · Skanska



# WHAT'S NEW?

- Contractor Controlled Insurance Program (CCIP)
- Union Labor Update
- Streamlined RFPs Where Applicable



# PROJECT OVERVIEWS



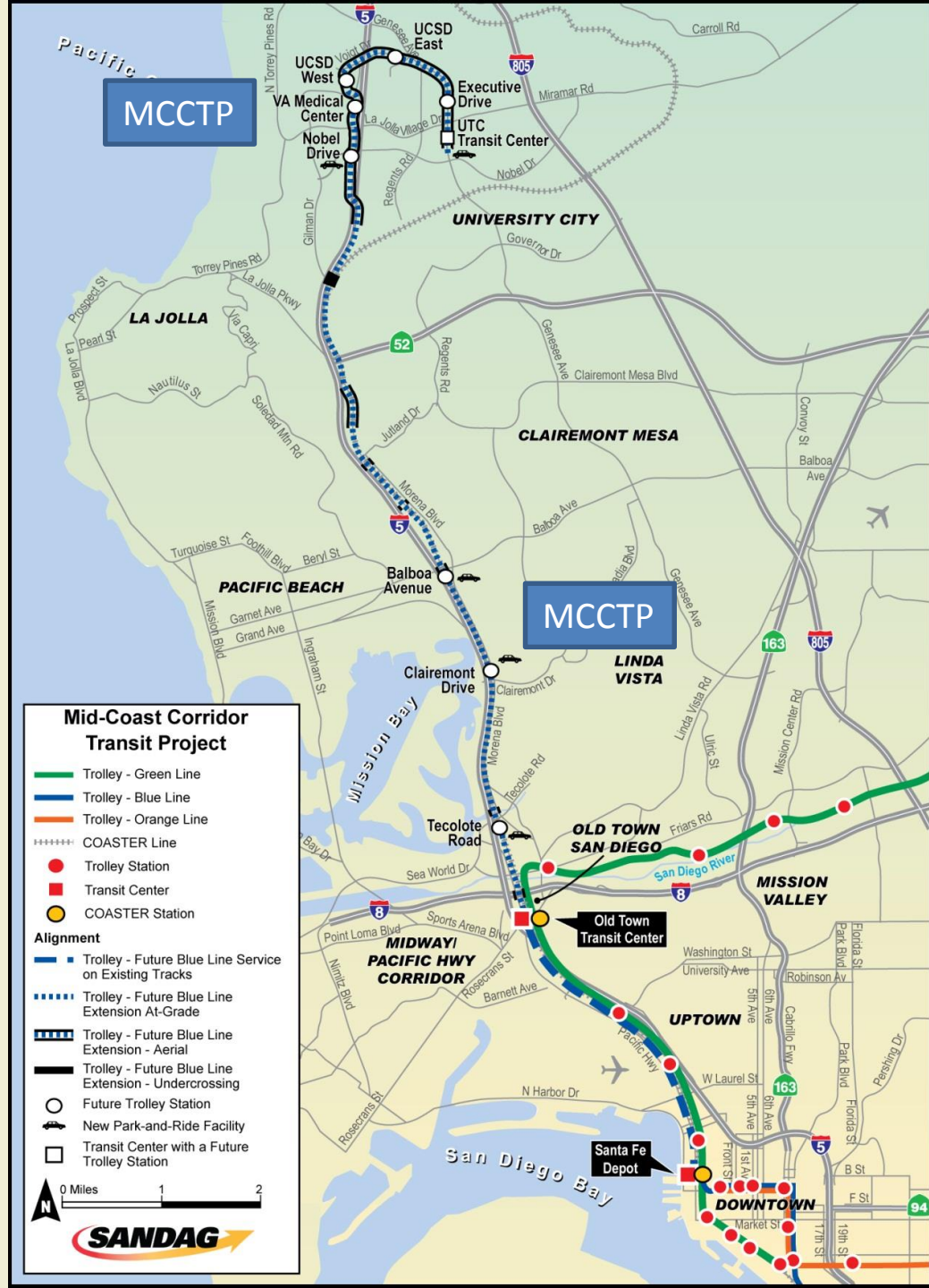
**MCTC**



**Mid-Coast Transit Constructors**  
Stacy and Witbeck · Herzog · Skanska

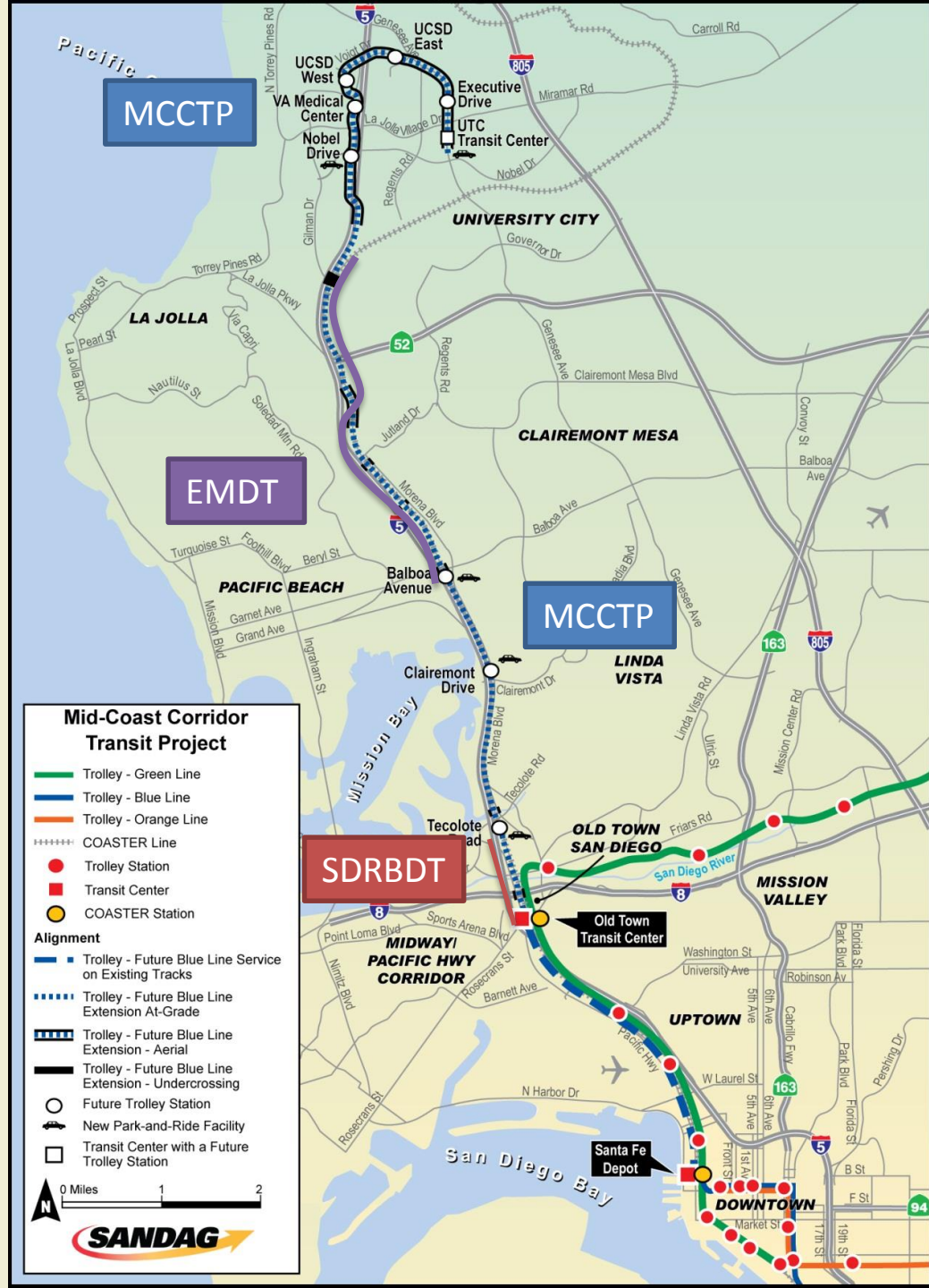
# Mid-Coast Corridor Transit Project

- Extension of Trolley Blue Line from Downtown to UTC Transit Center
- 10.9 miles of new LRT tracks
- Nine LRT stations
- Three miles of LRT fall within or adjacent to Caltrans right of way
- Two I-5 crossings



# Elvira to Morena Double Track

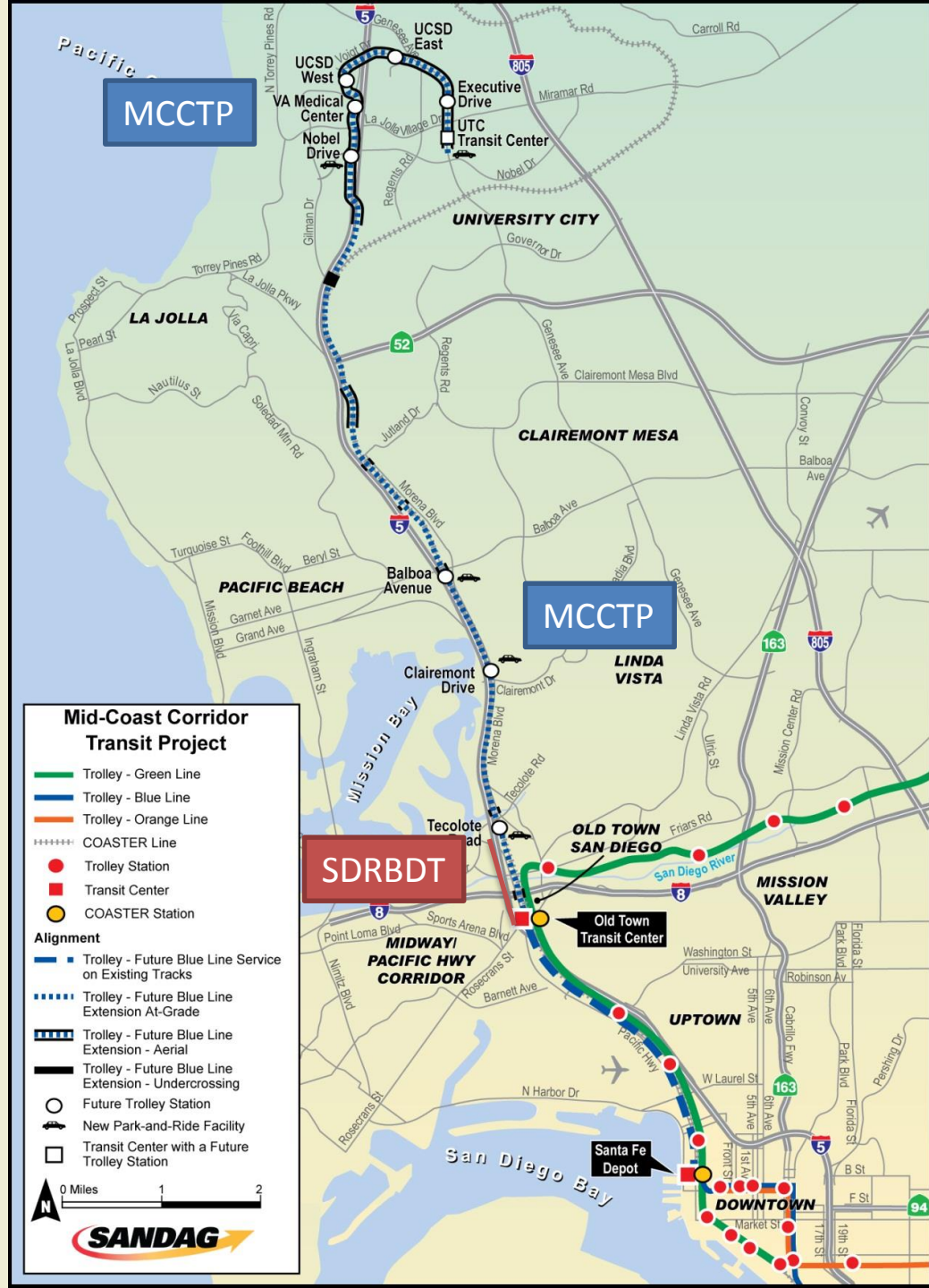
- Double Track Heavy Rail extension over Balboa Avenue and under SR-52
- Three miles of new tracks
- Project is within existing MTS right of way





# San Diego River Bridge Double Track

- Double Track Heavy Rail Bridge over San Diego River
- One mile of new double track
- Project is within existing MTS right of way and crosses under I-8





**MCTC**  
Mid-Coast Transit Constructors  
Stacy and Witbeck · Herzog · Skanska

# EMDT AND MCCTP WORK ELEMENTS AND NEAR-TERM BIDDING OPPORTUNITIES



The background of the slide features a map of San Diego. A blue line representing a transit corridor runs vertically through the center-right of the map. Key locations labeled on the map include 'LINDA VISTA' at the top right, 'OLD TOWN SAN DIEGO' in the middle right, and 'Old Town Transit Center' with a callout box pointing to a yellow circle on the corridor. Other labels include 'Remont Drive', 'Mentana Blvd', 'Providence Rd', 'San Diego Ave', 'HAWAYI TRAIL HWY CORRIDOR', and 'San Diego'. A highway shield for '8' is also visible.

**MCTC**



**Mid-Coast Transit Constructors**  
Stacy and Witbeck · Herzog · Skanska

# EMDT Scope Bid Packages

## SUBCONTRACT WORK

Bridge Demolition	Sept./Oct. 2015
Cellular Concrete	Sept./Oct. 2015
Clear and Grub	Sept./Oct. 2015
Concrete Flatwork	Sept./Oct. 2015
Drilled Shafts (CIDH)	Sept./Oct. 2015
Fencing	Sept./Oct. 2015
Landscaping	Sept./Oct. 2015
Reinforcing Steel	Sept./Oct. 2015
Soldier Pile Shoring	Sept./Oct. 2015
Structural Coatings	Sept./Oct. 2015
Structural Steel Bridges	Sept./Oct. 2015
Track Welding	Sept./Oct. 2015
Traffic Control	Sept./Oct. 2015
Waterproofing	Sept./Oct. 2015

## MATERIAL SUPPLY

Aggregate (Base, Subballast, Structural) Materials	Sept./Oct. 2015
Ballast Rock	Sept./Oct. 2015
Concrete Supply	Sept./Oct. 2015
MSE Wall Panels	Sept./Oct. 2015
Perforated Drainage Pipe	Sept./Oct. 2015
Precast Concrete Gravity Blocks	Sept./Oct. 2015
Prestressed Slab and Box Beams	Sept./Oct. 2015
Special Track Turnouts	Sept./Oct. 2015
Structural Bearing Pads	Sept./Oct. 2015
Structural Piles	Sept./Oct. 2015
Timber Lagging	Sept./Oct. 2015
Track Material (Rail, Concrete Ties, Wood Ties)	Sept./Oct. 2015
Track OTM (Spikes, Anchors, Joint Bars, Weld Kits)	Sept./Oct. 2015

## SERVICES

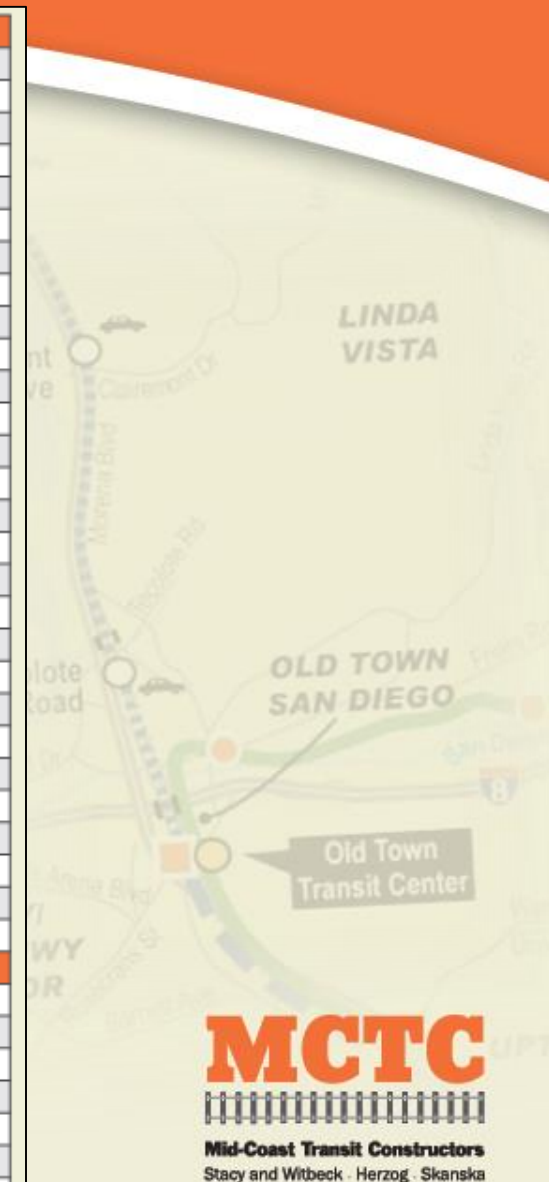
Concrete Pumping	Sept./Oct. 2015
Street Sweeping	Sept./Oct. 2015
Trucking	Sept./Oct. 2015



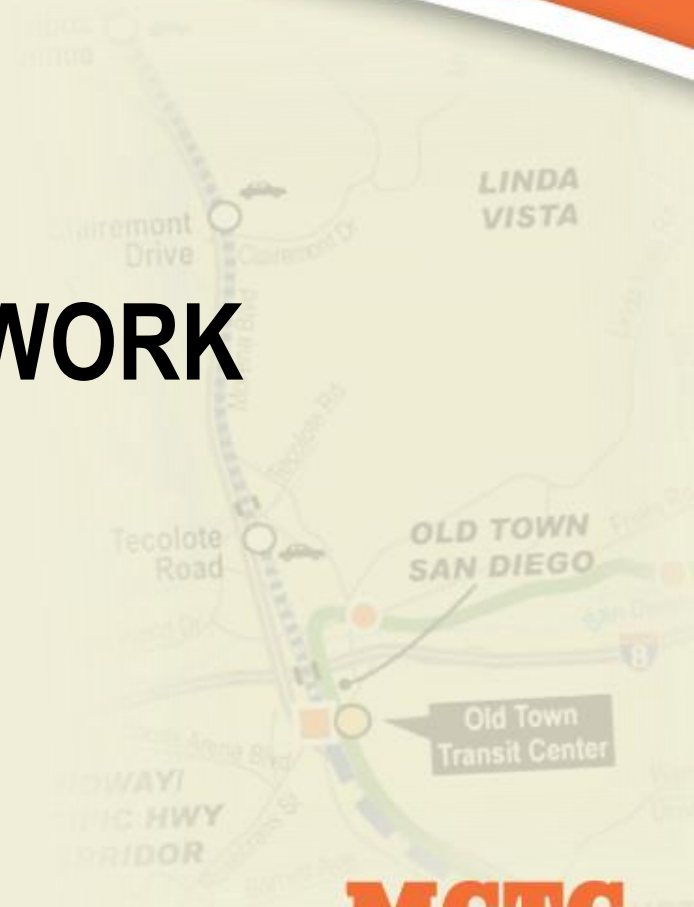


# MCCTP Scope Bid Packages

SUBCONTRACT WORK	
Clear and Grub	Sept./Oct. 2015
Concrete Flatwork/Paving	Sept./Oct. 2015
Track Demolition	Sept./Oct. 2015
Bridge Demolition	Sept./Oct. 2015
Storm Drain Culverts/Inlets/Manholes	Sept./Oct. 2015
AC Paving	Sept./Oct. 2015
Structural Coatings	Sept./Oct. 2015
Cellular Concrete	Sept./Oct. 2015
Drilled Shafts (CIDH)	Sept./Oct. 2015
Electrical	Sept./Oct. 2015
Elevators/Shaft Glazing	Sept./Oct. 2015
Fencing/Handrail/Guardrail	Sept./Oct. 2015
Traffic Control	Sept./Oct. 2015
Landscaping	Sept./Oct. 2015
Parking Structure Design/Build	Sept./Oct. 2015
Plumbing	Sept./Oct. 2015
Rebar	Sept./Oct. 2015
Roadway Striping/Signage	Sept./Oct. 2015
Shoring Walls	Sept./Oct. 2015
Soil Nail/Ground Anchor/Shotcrete Walls	Sept./Oct. 2015
Station Steel Canopy	Sept./Oct. 2015
Structural Steel	Sept./Oct. 2015
Traffic Signals/Lighting	Sept./Oct. 2015
Trucking	Sept./Oct. 2015
Waterproofing	Sept./Oct. 2015
Painting	Sept./Oct. 2015
Post Tensioning	Sept./Oct. 2015
Station Electrical	Sept./Oct. 2015
MATERIAL SUPPLY	
Aggregate Supply	Sept./Oct. 2015
Concrete Supply	Sept./Oct. 2015
Track Material (Rail, Ties, OTM)	Sept./Oct. 2015
MSE Wall Supply	Sept./Oct. 2015
Precast Girders	Sept./Oct. 2015
RCP Pipe	Sept./Oct. 2015
Special Trackwork and Direct Fixation Fasteners	Sept./Oct. 2015
Steel Pipe	Sept./Oct. 2015



# BIDDING ON THE WORK



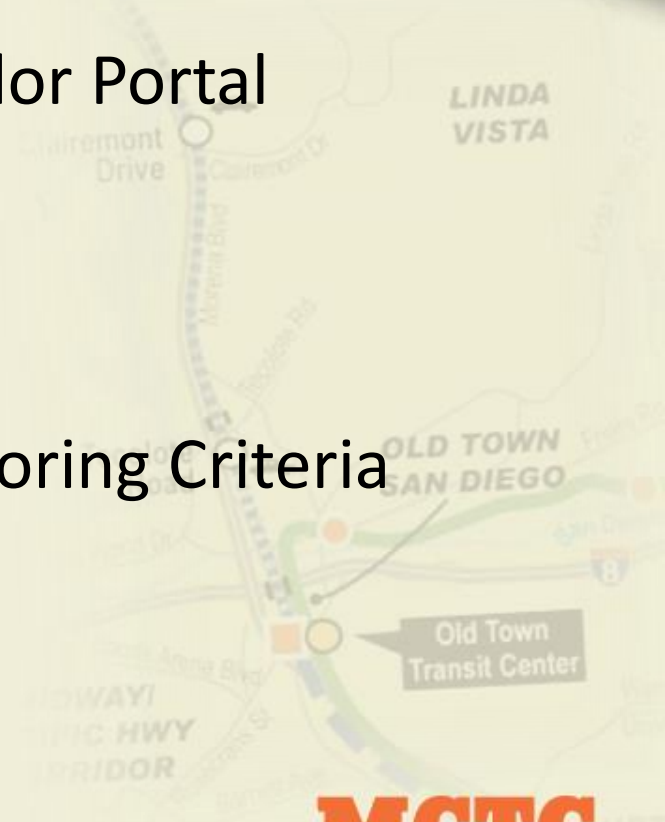
**MCTC**



**Mid-Coast Transit Constructors**  
Stacy and Witbeck · Herzog · Skanska

# BIDDING ON THE WORK

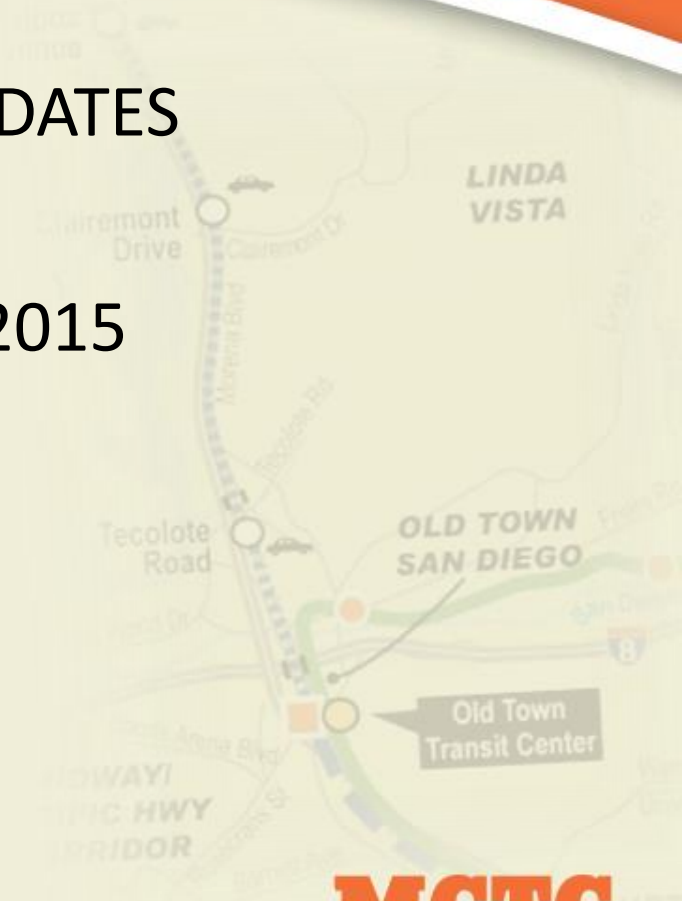
- Document Distribution via Mid-Coast Vendor Portal
- Submit Your Bid via Mid-Coast Vendor Portal
  - Standard Bid Documents
  - Scope Specific Documents
  - Buy America
- Best Value Selection Process and Scoring Criteria
  - Price
  - Approach
  - Experience
  - DBE Participation
  - Overall DBE Goal: 11.3%



# SCHEDULE

## EMDT AND MCCTP ANTICIPATED BID DATES

- Solicit Bids: OCTOBER 2015
- Bid Date: NOVEMBER/DECEMBER 2015
- Notice to Proceed: MARCH 2016





construction organizations to bring a collection of talents uniquely suited for the CMGC 1 projects. MCTC team members are heavy civil constructors specializing in CM/GC contracting for rail projects. We are experts at self-performing rail and bridge work proudly managed and built by our own forces.

In the past 10 years our firms have constructed over 600 miles of track for passenger service. Together, our CM/GC experience includes more than 30 rail transit projects with a total value of over \$4.7 billion.

Stacy and  
Witbeck

HERZOG

SKANSKA



MCTC is committed to maximizing the participation of local and disadvantaged firms to benefit the community while providing SANDAG the best value. Learn about how your company can join our team.

[OPPORTUNITIES](#)



If you are ready to join the team and would like to register your company for future work on this project, please follow the link below to begin the registration process on Planet Bid's website.

[PLANETBID](#)

# MCTC



**Mid-Coast Transit Constructors**  
Stacy and Witbeck · Herzog · Skanska

# CONTACT US

**TINA MCGILVERY**

**[TMCGILVERY@MCTCJV.COM](mailto:TMCGILVERY@MCTCJV.COM)**

**619-385-5258**

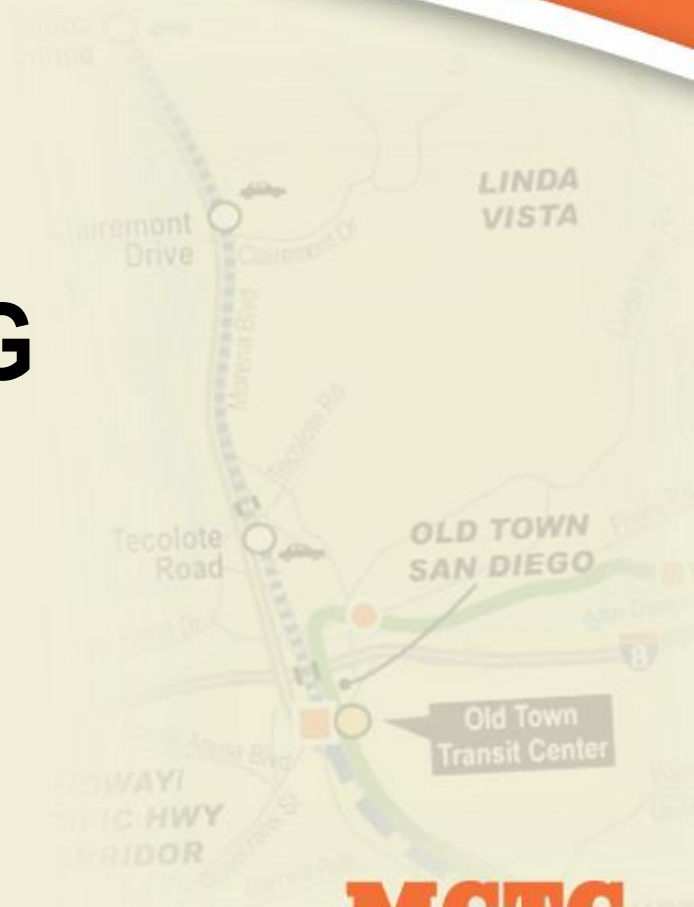
**WWW.MCTCJV.COM**

**MCTC**



**Mid-Coast Transit Constructors**  
Stacy and Witbeck · Herzog · Skanska

# NETWORKING



**MCTC**



**Mid-Coast Transit Constructors**  
Stacy and Witbeck · Herzog · Skanska