

DBE CONNECTION

MID-COAST CORRIDOR TRANSIT PROJECT



August 2018

MCTC



Mid-Coast Transit Constructors
Stacy and Witbeck · Herzog · Skanska

DBE & SB STATS

IMPORTANT UPCOMING DATES

CONSTRUCTION UPDATE

DBE FUN FACT

PROCUREMENT OPPORTUNITIES

CONSTRUCTION BENCH OPPORTUNITIES



DBE & SB STATS (Through June 2018)

83 SB Firms
Contracted with MCTC

\$50 Million
committed to SB firms

89 DBE Firms
Contracted with MCTC

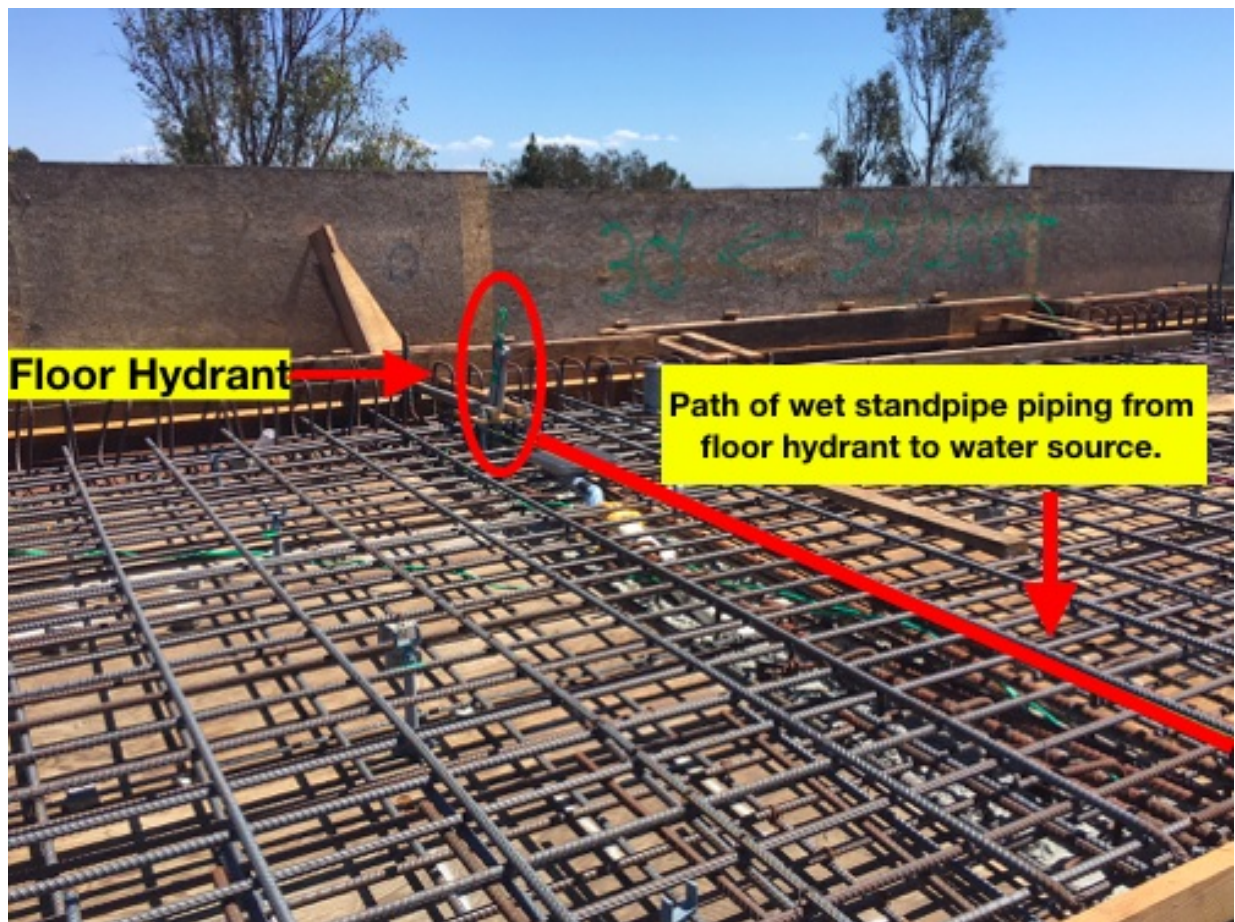
\$86 Million
committed to DBE firms

**Please note: Last month's May data stating 110 SB firms contracted with MCTC was reported incorrectly. This month's June data reporting 83 SB firms contracted is correct.*

IMPORTANT UPCOMING DATES

- **August 6th-8th:** Department of the Navy Gold Coast Small Business Procurement Event (Click [HERE](#) for more information)

CONSTRUCTION UPDATE



Future Voigt Station on the Mid-Coast Corridor Transit Project: In preparation for a deck concrete pour, the wet standpipe piping is installed prior to the rebar.

One of the most important safety aspects of the Mid-Coast Corridor Transit Project is the fire protection and suppression systems installed at the nine stations along the alignment. These systems protect commuters by signaling an alarm in the event of a fire, and by slowing the spread of fire to allow time for safe evacuation.

MCTC's subcontractor, Paradigm Mechanical Corporation (Paradigm, a DBE) has contracted with Cosco for the the installation of the fire protection system, while Simplex will be responsible for the fire alarm and fire suppression system. The fire protection system is comprised of elements that deliver water to a fire including sprinklers, wet standpipes, and floor hydrants. The fire suppression system consists of

clean agent gas, release valves, and storage tanks. When the fire alarm is triggered, a system of release valves will emit the clean agent. The fire will immediately be suppressed through heat reduction. A clean agent system protects the train and station's electrical and communication systems by preventing water damage.

MCTC and the Paradigm team are investing significant time and budget into the design, installation, and testing of the fire protection and suppression systems to ensure the safest conditions exist for commuters.

DBE FUN FACT

Did you know the number of woman-owned DBE businesses is on the rise?

Based on a disparity study performed by Caltrans ten years ago, women-owned DBE firms accounted for **36%** of all DBEs certified in California in 2007. Out of the approximate **5,000** DBE firms currently certified in California, just under **50%** are now woman-owned.

244 of those firms, including Paradigm (see above), are based in the greater San Diego area.

PROCUREMENT OPPORTUNITIES

- **RFP #145:** Reinforced Concrete Ancillary Buildings (Bid closes on August 9, 2018)
- **RFP #147:** Station Signage (Bid closes on August 16, 2018)
- **RFP #148:** Station Concrete (Bid closes on August 16, 2018)



Visit the Mid-Coast Corridor Transit Project's [Vendor Portal](#) for more information.

CONSTRUCTION BENCH OPPORTUNITIES

- Landscaping and Irrigation
- Painting and Anti-Graffiti Coatings
- For Station Ancillary Buildings:
 - Metal Roofing
 - Fireproof Metal Doors & Hardware
 - Interior Finishes
 - Waterproofing

Click [HERE](#) to fill out the Questionnaire to apply for the MCTC Construction Bench for the above and future opportunities. We encourage all DBEs and SBs to apply!

For additional information about the Mid-Coast Corridor Transit Project,
please visit www.mctcgv.com.